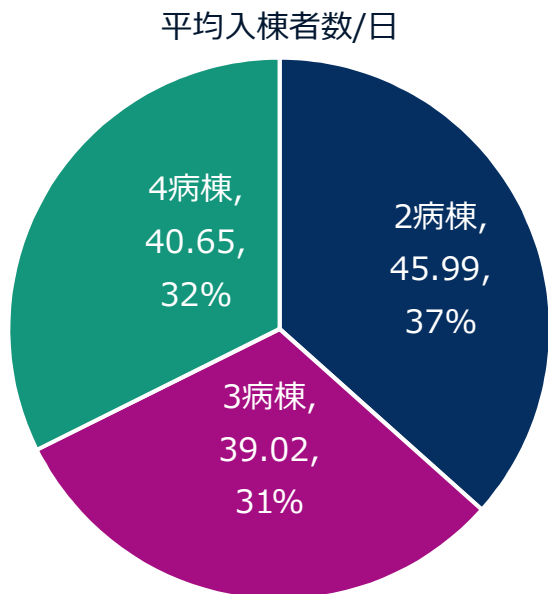


1. 回復期病棟別 平均入棟者数/日 (全体平均=125.66)

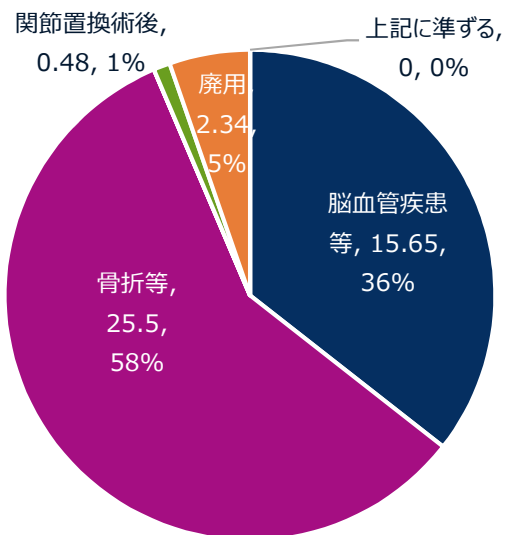


□全体稼働率 : 87.26%(前回比▲0.7)

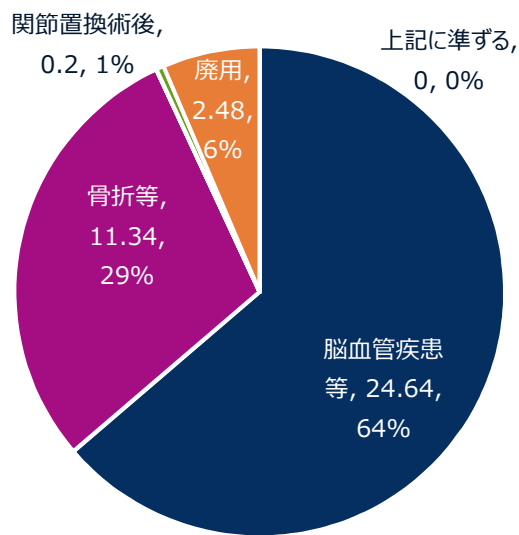
- 2 病棟稼働率 88.44%
- 3 病棟稼働率 84.83%
- 4 病棟稼働率 88.7%

2. 入棟理由別 平均入棟者数/日

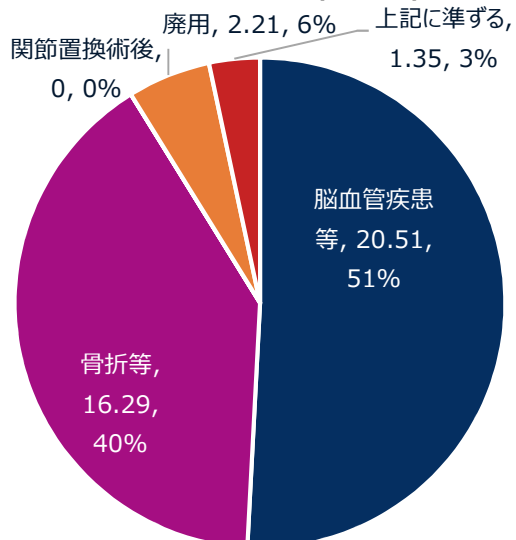
平均入棟者数/日(2病棟)



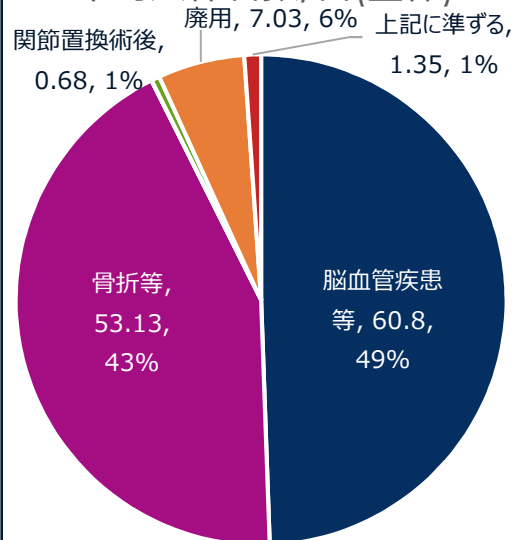
平均入棟者数/日(3病棟)



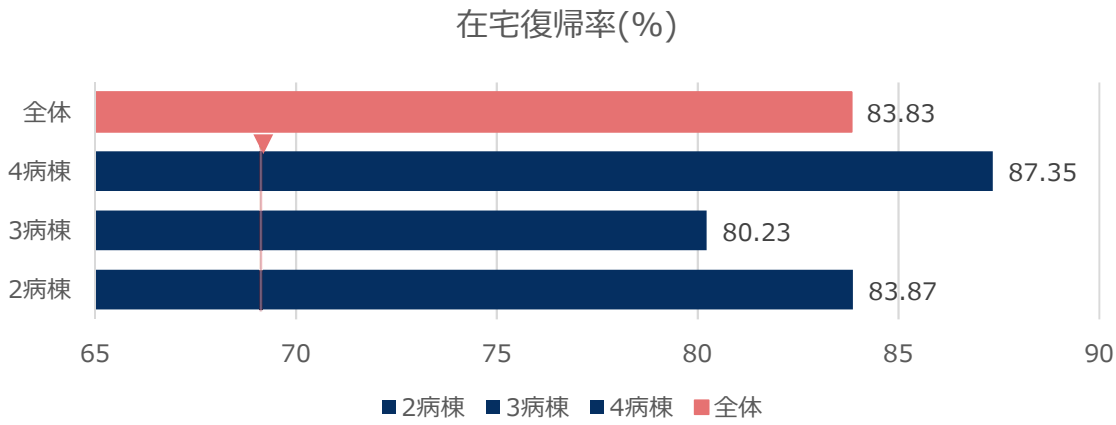
平均入棟者数/日(4病棟)



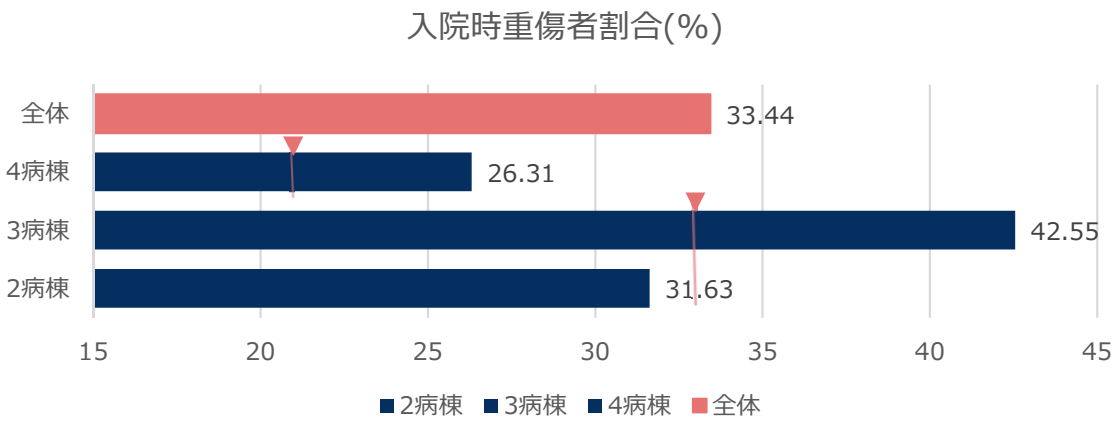
平均入棟者数/日(全体)



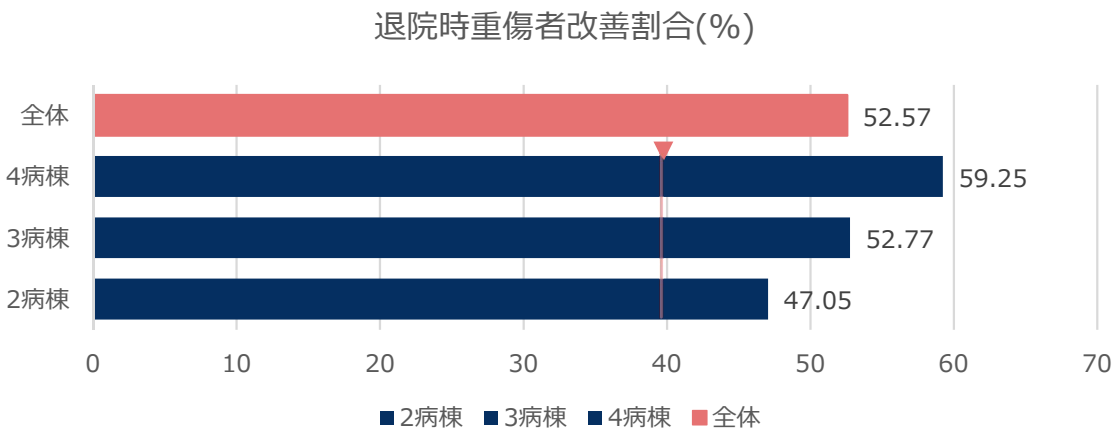
### 3. 在宅復帰率



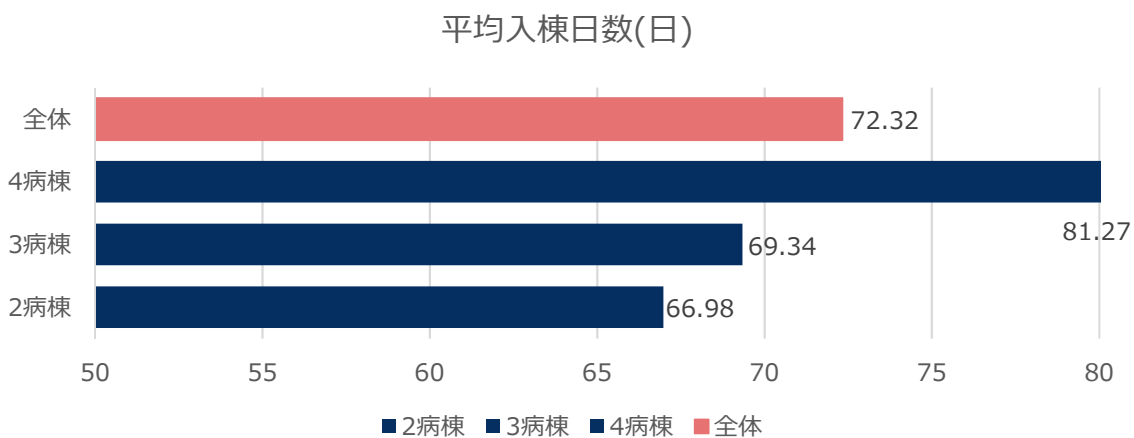
### 4. 入院時重傷者割合



### 5. 退院時重傷者改善割合



### 6. 平均入棟日数



## 7. 実績指数

